

© International Baccalaureate Organization 2023

All rights reserved. No part of this product may be reproduced in any form or by any electronic or mechanical means, including information storage and retrieval systems, without the prior written permission from the IB. Additionally, the license tied with this product prohibits use of any selected files or extracts from this product. Use by third parties, including but not limited to publishers, private teachers, tutoring or study services, preparatory schools, vendors operating curriculum mapping services or teacher resource digital platforms and app developers, whether fee-covered or not, is prohibited and is a criminal offense.

More information on how to request written permission in the form of a license can be obtained from <https://ibo.org/become-an-ib-school/ib-publishing/licensing/applying-for-a-license/>.

© Organisation du Baccalauréat International 2023

Tous droits réservés. Aucune partie de ce produit ne peut être reproduite sous quelque forme ni par quelque moyen que ce soit, électronique ou mécanique, y compris des systèmes de stockage et de récupération d'informations, sans l'autorisation écrite préalable de l'IB. De plus, la licence associée à ce produit interdit toute utilisation de tout fichier ou extrait sélectionné dans ce produit. L'utilisation par des tiers, y compris, sans toutefois s'y limiter, des éditeurs, des professeurs particuliers, des services de tutorat ou d'aide aux études, des établissements de préparation à l'enseignement supérieur, des fournisseurs de services de planification des programmes d'études, des gestionnaires de plateformes pédagogiques en ligne, et des développeurs d'applications, moyennant paiement ou non, est interdite et constitue une infraction pénale.

Pour plus d'informations sur la procédure à suivre pour obtenir une autorisation écrite sous la forme d'une licence, rendez-vous à l'adresse <https://ibo.org/become-an-ib-school/ib-publishing/licensing/applying-for-a-license/>.

© Organización del Bachillerato Internacional, 2023

Todos los derechos reservados. No se podrá reproducir ninguna parte de este producto de ninguna forma ni por ningún medio electrónico o mecánico, incluidos los sistemas de almacenamiento y recuperación de información, sin la previa autorización por escrito del IB. Además, la licencia vinculada a este producto prohíbe el uso de todo archivo o fragmento seleccionado de este producto. El uso por parte de terceros —lo que incluye, a título enunciativo, editoriales, profesores particulares, servicios de apoyo académico o ayuda para el estudio, colegios preparatorios, desarrolladores de aplicaciones y entidades que presten servicios de planificación curricular u ofrezcan recursos para docentes mediante plataformas digitales—, ya sea incluido en tasas o no, está prohibido y constituye un delito.

En este enlace encontrará más información sobre cómo solicitar una autorización por escrito en forma de licencia: <https://ibo.org/become-an-ib-school/ib-publishing/licensing/applying-for-a-license/>.

Mathematics: analysis and approaches

Standard level

Paper 1

8 May 2023

Zone A afternoon | Zone B morning | Zone C afternoon

Candidate session number

1 hour 30 minutes

--	--	--	--	--	--	--	--	--	--

Instructions to candidates

- Write your session number in the boxes above.
- Do not open this examination paper until instructed to do so.
- You are not permitted access to any calculator for this paper.
- Section A: answer all questions. Answers must be written within the answer boxes provided.
- Section B: answer all questions in the answer booklet provided. Fill in your session number on the front of the answer booklet, and attach it to this examination paper and your cover sheet using the tag provided.
- Unless otherwise stated in the question, all numerical answers should be given exactly or correct to three significant figures.
- A clean copy of the **mathematics: analysis and approaches formula booklet** is required for this paper.
- The maximum mark for this examination paper is **[80 marks]**.



Full marks are not necessarily awarded for a correct answer with no working. Answers must be supported by working and/or explanations. Where an answer is incorrect, some marks may be given for a correct method, provided this is shown by written working. You are therefore advised to show all working.

Section A

Answer **all** questions. Answers must be written within the answer boxes provided. Working may be continued below the lines, if necessary.

1. [Maximum mark: 5]

Point P has coordinates $(-3, 2)$, and point Q has coordinates $(15, -8)$. Point M is the midpoint of [PQ].

(a) Find the coordinates of M. [2]

Line L is perpendicular to [PQ] and passes through M.

(b) Find the gradient of L . [2]

(c) Hence, write down the equation of L . [1]

.....

.....

.....

.....

.....

.....

.....

.....

.....

.....

.....

.....



2. [Maximum mark: 7]

The function f is defined by $f(x) = \frac{7x+7}{2x-4}$ for $x \in \mathbb{R}, x \neq 2$.

(a) Find the zero of $f(x)$. [2]

(b) For the graph of $y = f(x)$, write down the equation of

(i) the vertical asymptote;

(ii) the horizontal asymptote. [2]

(c) Find $f^{-1}(x)$, the inverse function of $f(x)$. [3]

.....

.....

.....

.....

.....

.....

.....

.....

.....

.....

.....

.....

.....

.....

.....

.....

.....

.....

.....

.....

.....

.....



Turn over

3. [Maximum mark: 6]

On a Monday at an amusement park, a sample of 40 visitors was randomly selected as they were leaving the park. They were asked how many times that day they had been on a ride called *The Dragon*. This information is summarized in the following frequency table.

Number of times on <i>The Dragon</i>	Frequency
0	6
1	16
2	13
3	2
4	3

It can be assumed that this sample is representative of all visitors to the park for the following day.

(a) For the following day, Tuesday, estimate

(i) the probability that a randomly selected visitor will ride *The Dragon*;

(ii) the expected number of times a visitor will ride *The Dragon*.

[4]

It is known that 1000 visitors will attend the amusement park on Tuesday. *The Dragon* can carry a maximum of 10 people each time it runs.

(b) Estimate the minimum number of times *The Dragon* must run to satisfy demand.

[2]

.....

.....

.....

.....

.....

.....

.....

.....

.....

.....

.....

.....

.....

.....

.....

.....

.....

.....

.....

.....

.....

.....

.....



4. [Maximum mark: 6]

(a) Show that the equation $\cos 2x = \sin x$ can be written in the form $2 \sin^2 x + \sin x - 1 = 0$. [1]

(b) Hence, solve $\cos 2x = \sin x$, where $-\pi \leq x \leq \pi$. [5]

.....

.....

.....

.....

.....

.....

.....

.....

.....

.....

.....

.....

.....

.....

.....



Turn over

5. [Maximum mark: 6]

Find the range of possible values of k such that $e^{2x} + \ln k = 3e^x$ has at least one real solution.

.....

.....

.....

.....

.....

.....

.....

.....

.....

.....

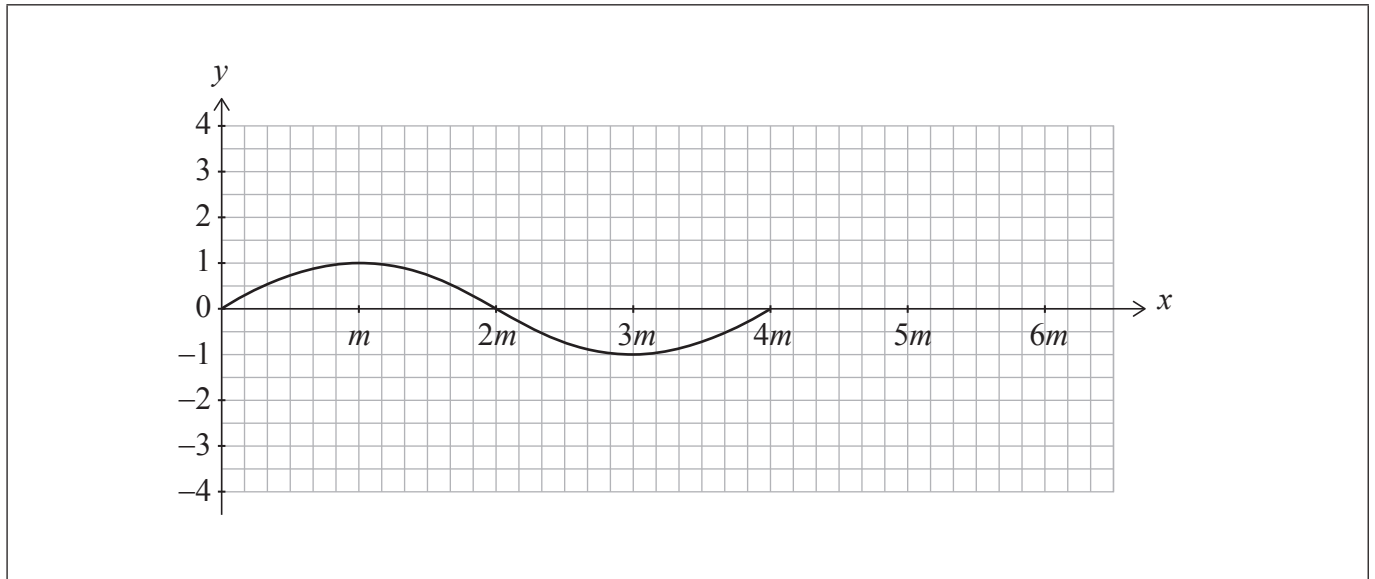
.....

.....



6. [Maximum mark: 6]

The function f is defined by $f(x) = \sin qx$, where $q > 0$. The following diagram shows part of the graph of f for $0 \leq x \leq 4m$, where x is in radians. There are x -intercepts at $x = 0, 2m$ and $4m$.



(a) Find an expression for m in terms of q . [2]

The function g is defined by $g(x) = 3\sin \frac{2qx}{3}$, for $0 \leq x \leq 6m$.

(b) On the axes above, sketch the graph of g . [4]

.....

.....

.....

.....

.....

.....

.....

.....

.....

.....

.....

.....

.....

.....

.....

.....

.....

.....

.....

.....

.....

.....

.....



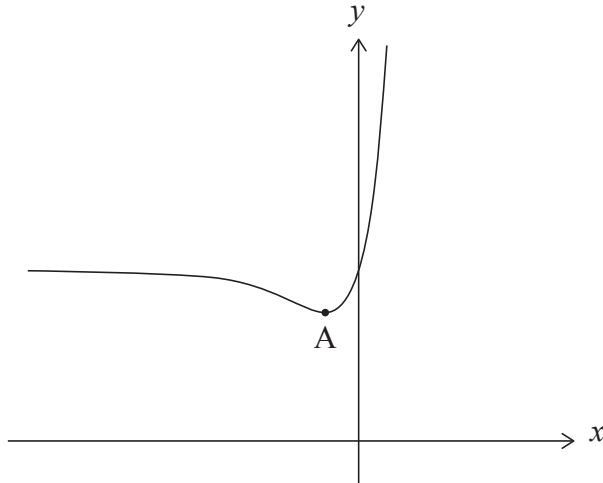
Do **not** write solutions on this page.

Section B

Answer **all** questions in the answer booklet provided. Please start each question on a new page.

7. [Maximum mark: 13]

The function h is defined by $h(x) = 2xe^x + 3$, for $x \in \mathbb{R}$. The following diagram shows part of the graph of h , which has a local minimum at point A .



- (a) Find the value of the y -intercept. [2]
- (b) Find $h'(x)$. [2]
- (c) Hence, find the coordinates of A . [5]
- (d) (i) Show that $h''(x) = (2x + 4)e^x$.
- (ii) Find the values of x for which the graph of h is concave-up. [4]



Do **not** write solutions on this page.

8. [Maximum mark: 14]

Consider the arithmetic sequence u_1, u_2, u_3, \dots .

The sum of the first n terms of this sequence is given by $S_n = n^2 + 4n$.

- (a) (i) Find the sum of the first five terms. [4]
(ii) Given that $S_6 = 60$, find u_6 . [4]
- (b) Find u_1 . [2]
- (c) Hence or otherwise, write an expression for u_n in terms of n . [3]

Consider a geometric sequence, v_n , where $v_2 = u_1$ and $v_4 = u_6$.

- (d) Find the possible values of the common ratio, r . [3]
- (e) Given that $v_{99} < 0$, find v_5 . [2]



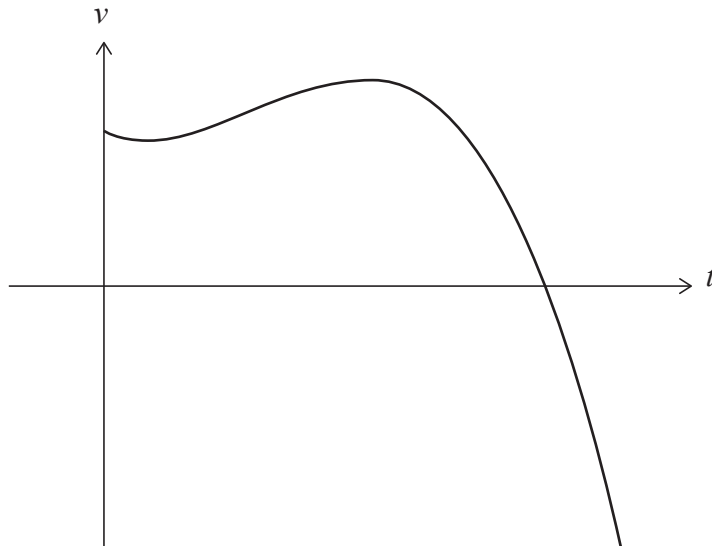
Do **not** write solutions on this page.

9. [Maximum mark: 17]

An object moves along a straight line. Its velocity, $v \text{ m s}^{-1}$, at time t seconds is given by

$$v(t) = -t^3 + \frac{7}{2}t^2 - 2t + 6, \text{ for } 0 \leq t \leq 4. \text{ The object first comes to rest at } t = k.$$

The graph of v is shown in the following diagram.



At $t = 0$, the object is at the origin.

- (a) Find the displacement of the object from the origin at $t = 1$. [5]
- (b) Find an expression for the acceleration of the object. [2]
- (c) Hence, find the greatest speed reached by the object before it comes to rest. [5]
- (d) Find the greatest speed reached by the object for $0 \leq t \leq 4$. [2]
- (e) Write down an expression that represents the distance travelled by the object while its speed is increasing. Do not evaluate the expression. [3]

References:

© International Baccalaureate Organization 2023



Please **do not** write on this page.

Answers written on this page
will not be marked.



12EP11

Please **do not** write on this page.

Answers written on this page
will not be marked.



12EP12